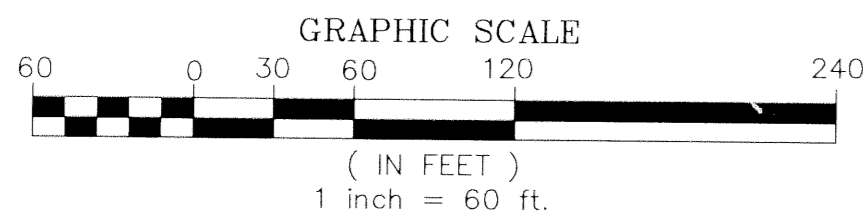


HUNTINGTON WALK PLAT NO.2

A PLANNED UNIT DEVELOPMENT

A REPLAT OF A PORTION OF TRACTS 104, 121 THROUGH 128, ALL OF TRACTS 97 THROUGH 103, BLOCK 9 AND THAT 15.00 FOOT WIDE RIGHT-OF-WAY LYING ADJACENT TO SAID TRACTS 97 THROUGH 104 AND THAT 15.00 FOOT WIDE RIGHT-OF-WAY LYING ADJACENT TO SAID TRACTS 97 RECORDED IN PLAT BOOK 2, PAGES 26 THROUGH 28 AND TRACT "K" AND A PORTION OF TRACTS "B", "D" AND "U", "HUNTINGTON WALK PLAT NO. 1, A P.U.D." ACCORDING TO THE PLAT THEREOF, AS RECORDED IN PLAT BOOK 83, PAGES 44 THROUGH 50 ALL OF THE PUBLIC RECORDS OF PALM BEACH COUNTY, FLORIDA, LYING IN SECTIONS 9 AND 10, TOWNSHIP 42 SOUTH, RANGE 42 EAST, PALM BEACH COUNTY, FLORIDA



THIS INSTRUMENT PREPARED BY
DAVID P. LINDLEY
OF
CAULFIELD and WHEELER, INC.
SURVEYORS - ENGINEERS - PLANNERS
7301-A WEST PALMETTO PARK ROAD, SUITE 100A
BOCA RATON, FLORIDA 33433 - (561)392-1991
OCTOBER - 1998

NOTES

COORDINATES, BEARINGS AND DISTANCES

COORDINATES SHOWN ARE GRID
DATUM = NAD 83 1990 ADJUSTMENT
ZONE = FLORIDA EAST
LINEAR UNIT = US SURVEY FEET
COORDINATE SYSTEM 1983 STATE PLANE
TRANSVERSE MERCATOR PROJECTION
ALL DISTANCES ARE GROUND
SCALE FACTOR = 1.0000290
GROUND DISTANCE X SCALE FACTOR = GRID DISTANCE
BEARINGS AS SHOWN HEREON ARE GRID DATUM, NAD 83 1990
ADJUSTMENT, FLORIDA EAST ZONE.

178

STATE OF FLORIDA
COUNTY OF PALM BEACH
THIS PLAT WAS FILED FOR
RECORD AT _____ M.
THIS _____ DAY OF _____
A.D. 1999 AND DULY RECORDED
IN PLAT BOOK _____ ON
PAGES _____ AND _____

DOROTHY H. WILKEN
CLERK CIRCUIT COURT

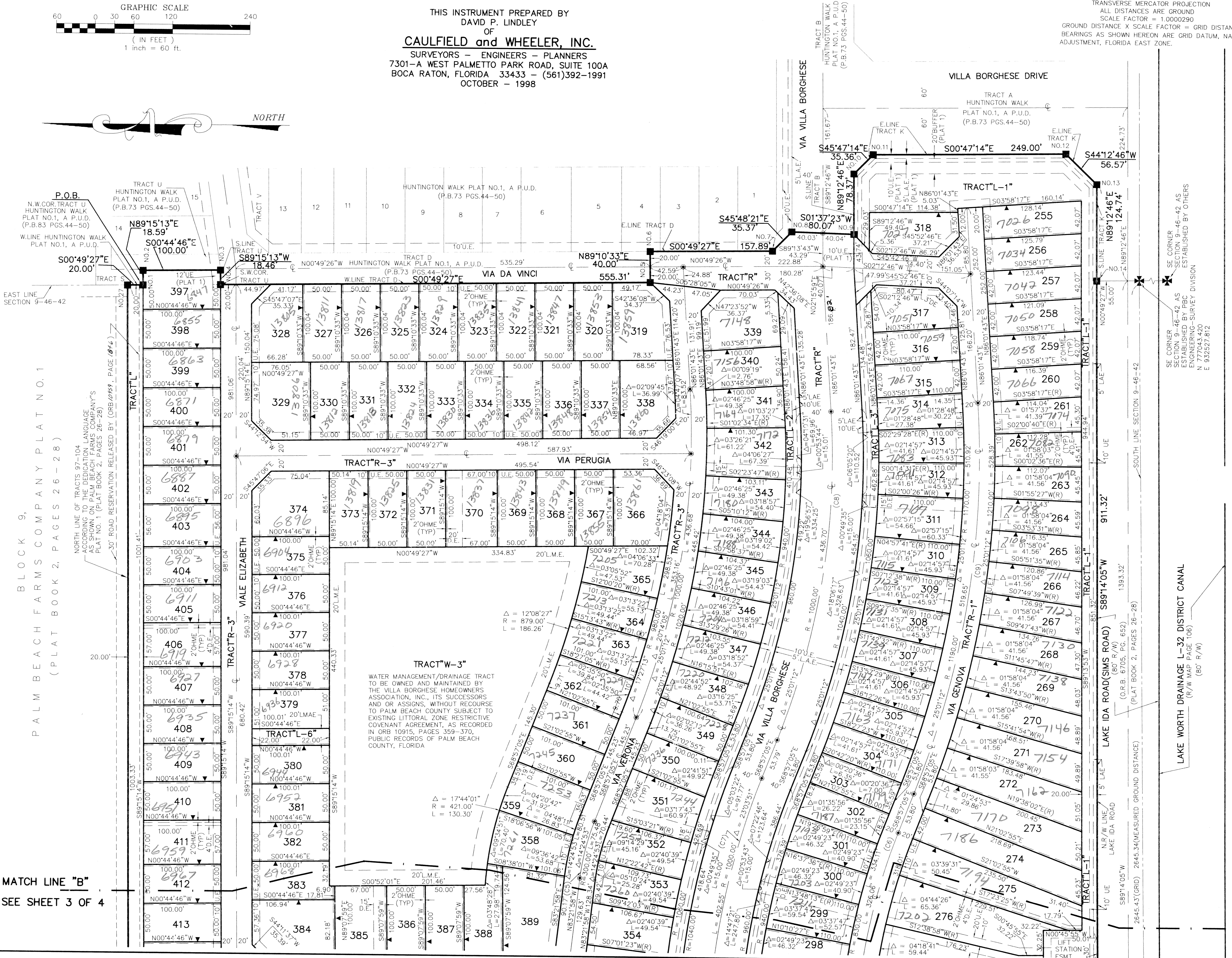
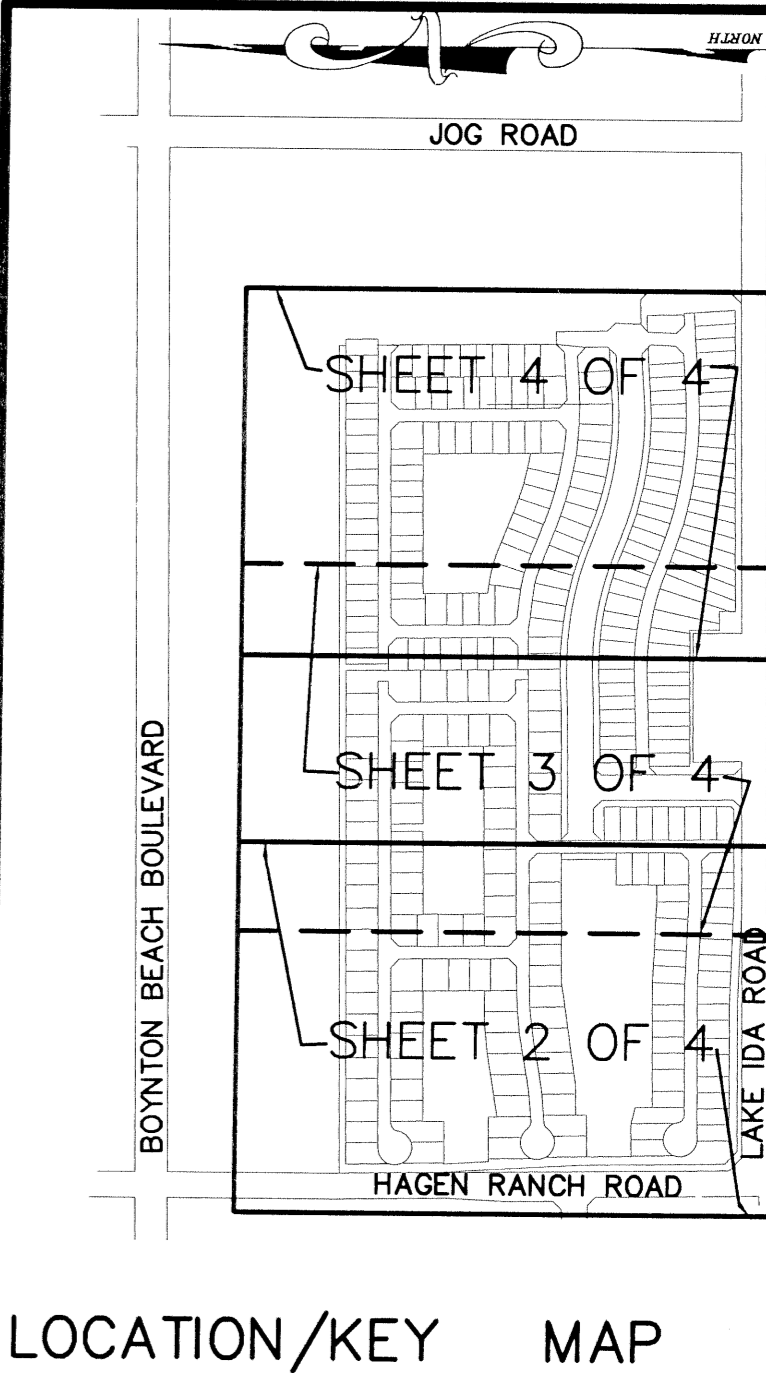
BY: _____
DEPUTY CLERK

SHEET 4 OF 4

CURVE NO.	CHORD BEARING	CHORD DISTANCE
(C1)	N83°59'42"E	167.75'
(C2)	N84°13'34"E	166.88'
(C3)	S89°15'56"E	52.35'
(C4)	S89°15'56"E	52.35'
(C5)	S76°09'32"E	75.28'
(C6)	S80°29'00"E	323.86'
(C7)	S80°28'59"E	399.83'
(C8)	S81°27'41"E	433.24'
(C9)	S81°27'41"E	515.53'
(C10)	S81°27'41"E	433.22'

COORDINATE TABLE

PRM NO.	NORTHING	EASTING
NO. 1	778330.502	932509.291
NO. 2	778330.745	932527.880
NO. 3	778230.750	932529.182
NO. 4	778230.510	932510.723
NO. 5	777675.241	932518.711
NO. 6	777675.816	932558.707
NO. 7	777571.938	932560.978
NO. 8	777493.281	932586.339
NO. 9	777413.241	932584.071
NO. 10	777414.318	932682.435
NO. 11	777389.660	932687.781
NO. 12	777140.676	932691.202
NO. 13	777100.128	932651.753
NO. 14	777098.414	932527.021
NO. 15	777086.241	931615.754
NO. 16	777238.232	932687.781
NO. 17	777232.862	931211.748
NO. 18	777080.871	931213.778
NO. 19	777074.864	930764.045
NO. 20	777084.656	930448.848
NO. 21	777078.643	929988.855
NO. 22	777118.086	929958.273
NO. 23	777568.147	929951.460
NO. 24	778017.842	929924.652
NO. 25	778316.786	929920.128
NO. 26	778333.644	931214.565
NO. 27	778350.501	932509.004



PALM BEACH FARMS COMPANY PLAT NO. 1
BLOCK 9,
PLAT BOOK 2, PAGES 26-28

MATCH LINE "B"
SEE SHEET 3 OF 4

Huntington Walk
Plat No. 2
Page 178
Block 9
Zone 51136
Zip Code 33414
TAX 765
PUD NAME Huntington Walk

TRACT "W-3"
WATER MANAGEMENT/DRAINAGE TRACT TO BE OWNED AND MAINTAINED BY THE VILLA BORGHESE HOMEOWNERS ASSOCIATION, INC. - ITS SUCCESSORS AND OR ASSIGNS, WITHOUT RECOURSE TO PALM BEACH COUNTY SUBJECT TO EXISTING LITTORAL ZONE RESTRICTIVE COVENANT AGREEMENT, AS RECORDED IN ORB 10915, PAGES 359-370, PUBLIC RECORDS OF PALM BEACH COUNTY, FLORIDA

SE CORNER SECTION 9-46-42 AS ESTABLISHED BY PBC ENGINEERING-SURVEY DIVISION N 777043.420 E 932527.612

LAKE WORTH DRAINAGE L-32 DISTRICT CANAL (R/W MAP PAGE 100) (60' R/W)

LAKE IDA ROAD (SIMS ROAD) (60' R/W) (OR.B. 6705, PG. 692) 1394.32 (PLAT BOOK 2, PAGES 26-28)